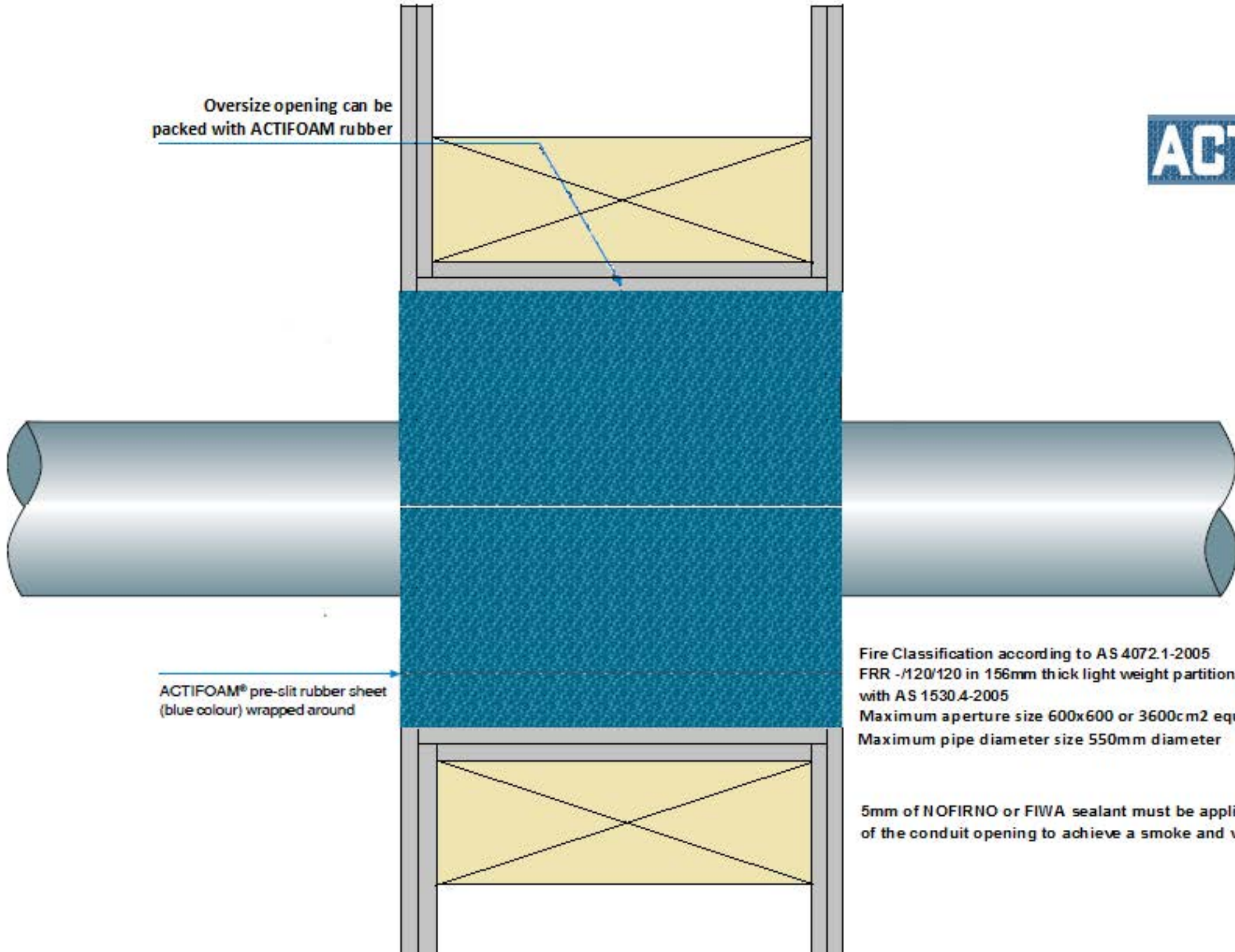


ACTIFOAM

Oversize opening can be packed with ACTIFOAM rubber



Pipe can be ducted off centre through conduit opening

ACTIFOAM® pre-slit rubber sheet (blue colour) wrapped around

Fire Classification according to AS 4072.1-2005
FRR -/120/120 in 156mm thick light weight partition tested in accordance with AS 1530.4-2005
Maximum aperture size 600x600 or 3600cm² equivalent area
Maximum pipe diameter size 550mm diameter

5mm of NOFIRNO or FIWA sealant must be applied to both sides of the conduit opening to achieve a smoke and water tight seal